

Identification of student risk, receptivity and outreach prioritization

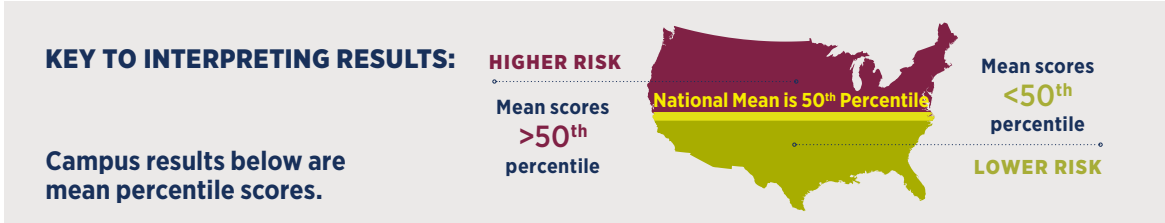
COLLEGE STUDENT INVENTORY™ SUMMARY RESULTS, FALL

COHORT

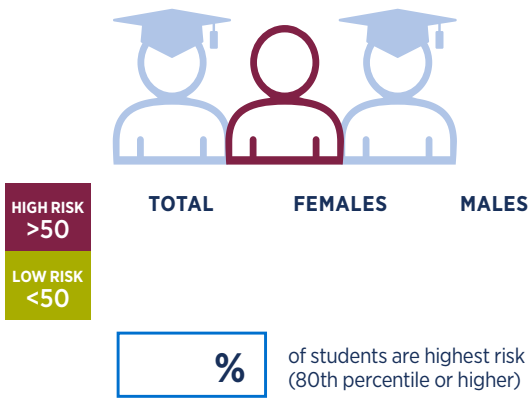
N=
CSI Completion rate

incoming students

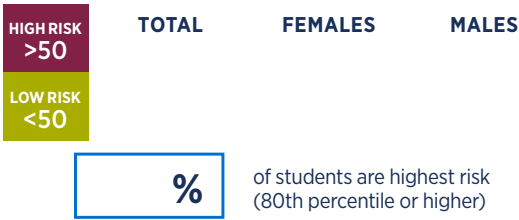
1 Are our students more or less at risk than their peers nationally?



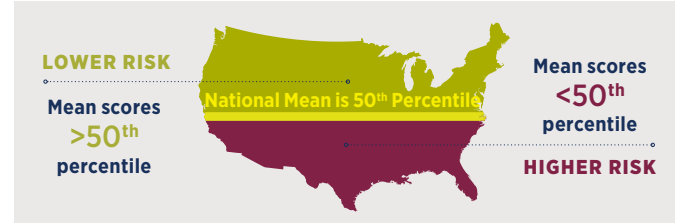
Overall Risk Index



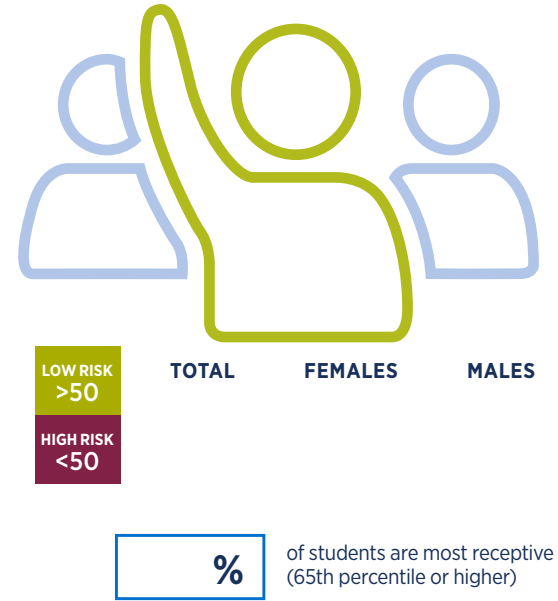
Predicted Academic Difficulty



2 Are our students more/less receptive to assistance?



Receptivity to Institutional Help



Educational Stress



3 What are some key characteristics of this incoming class?



Students who plan to work over 20 hours per week.

Percent and number of students



Students with high desire to transfer.

80th percentile or above



Students who plan to earn a degree beyond a bachelor's.

Percent and number of students

Students' Top 10 Requests for Assistance (Get Help/Discuss/Get Info)

1.	%
2.	%
3.	%
4.	%
5.	%
6.	%
7.	%
8.	%
9.	%
10.	%

The percentage score is based on the number of students whose request for assistance on each item was 6 or higher (in a range of 1-10).

4 Other information