

Development Day
May 21st, 2019

Eric Williams

ewilli28@fitchburgstate.edu

Biology & Chemistry Department



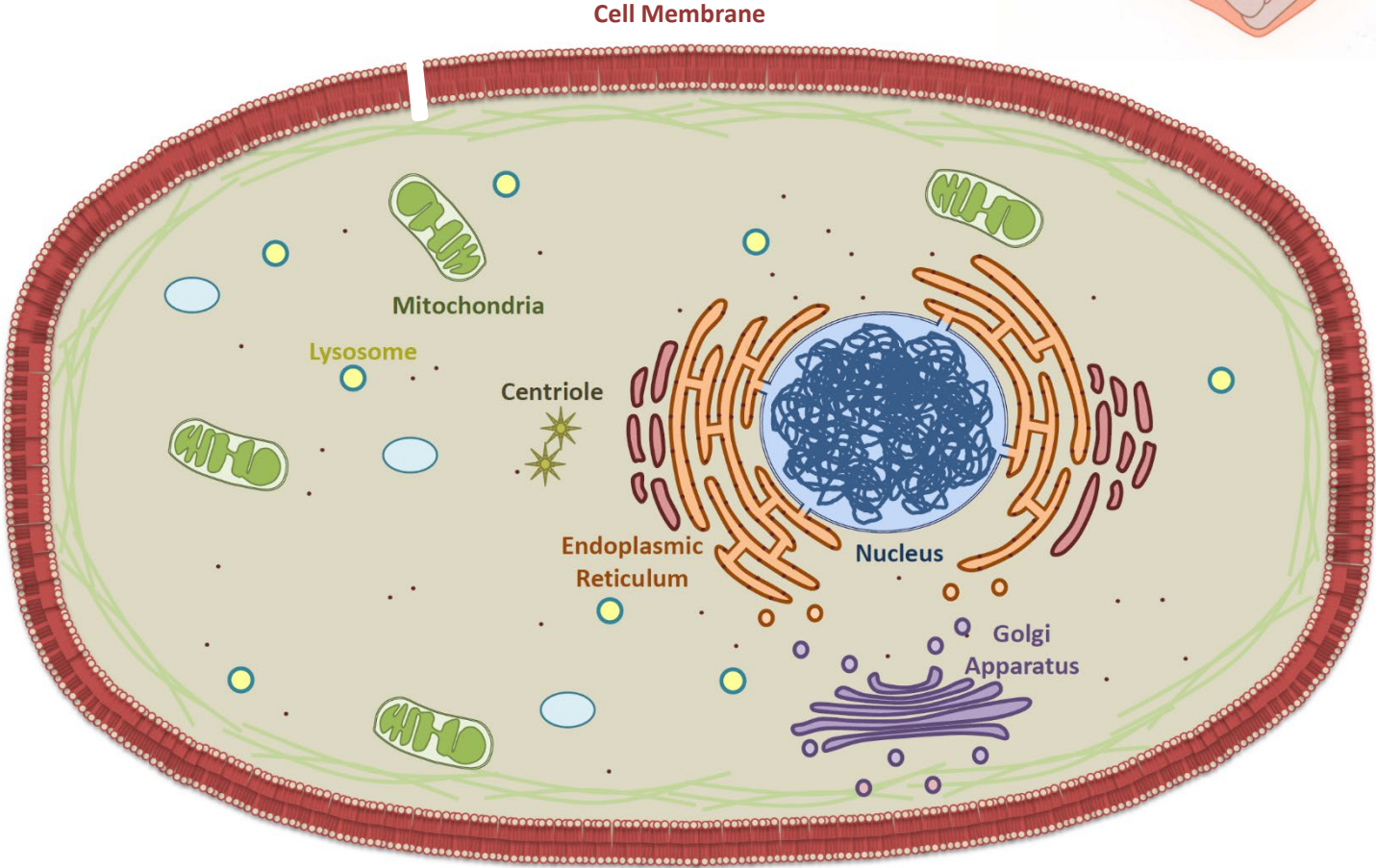
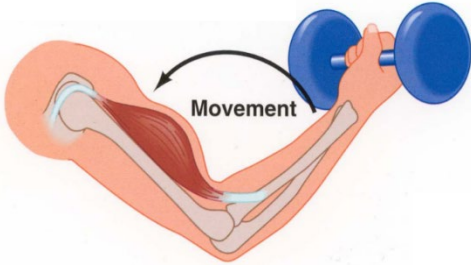
Dysferlinopathy

Average age at diagnosis is ~25 years of age

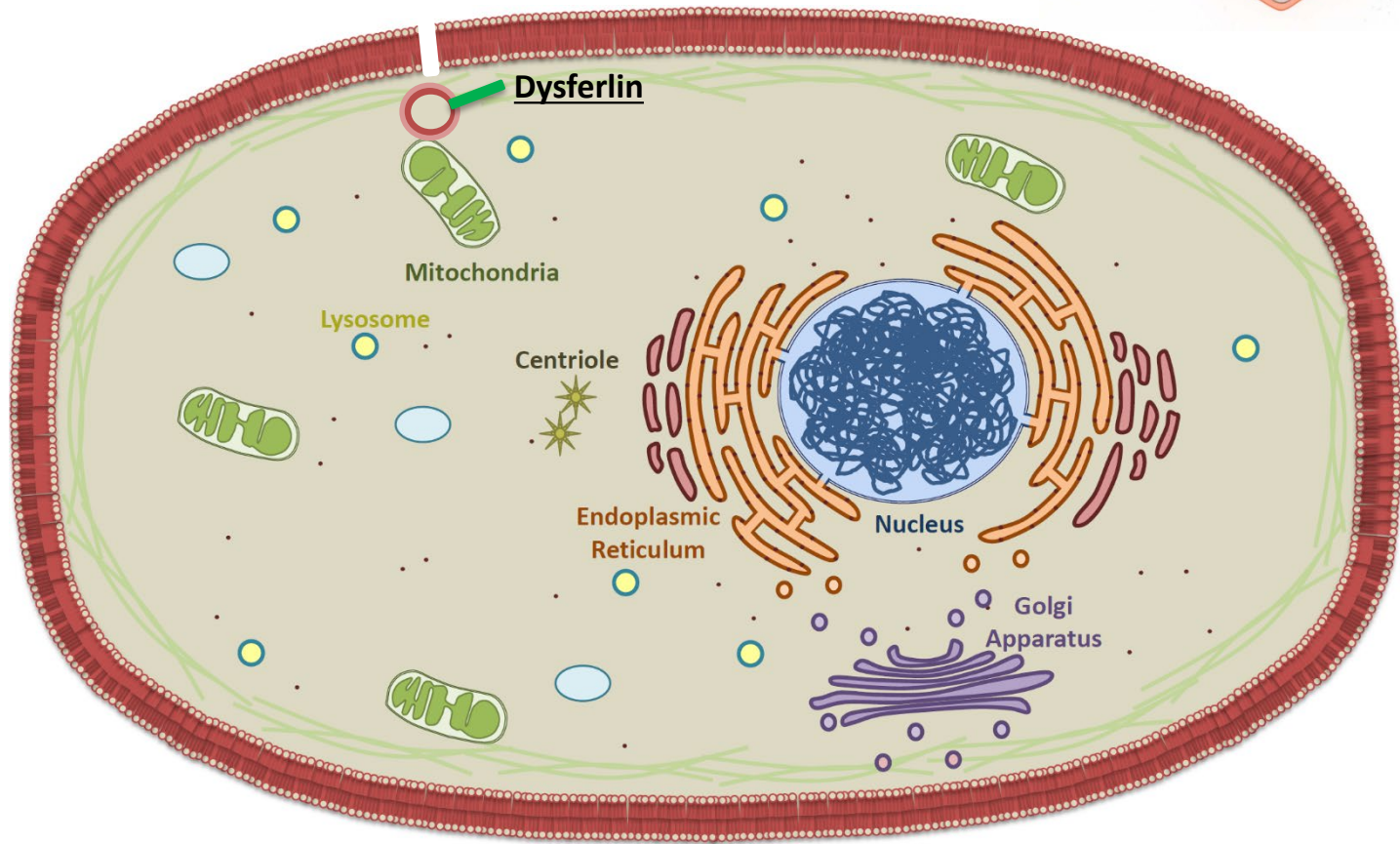
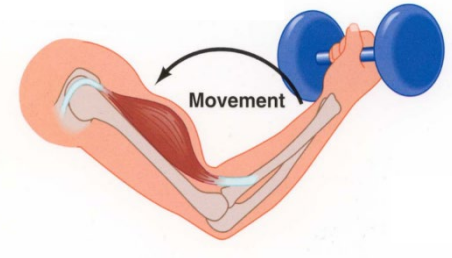
Patients generally require a wheel chair within 5-10 years of diagnosis

Currently there are no drug treatment options

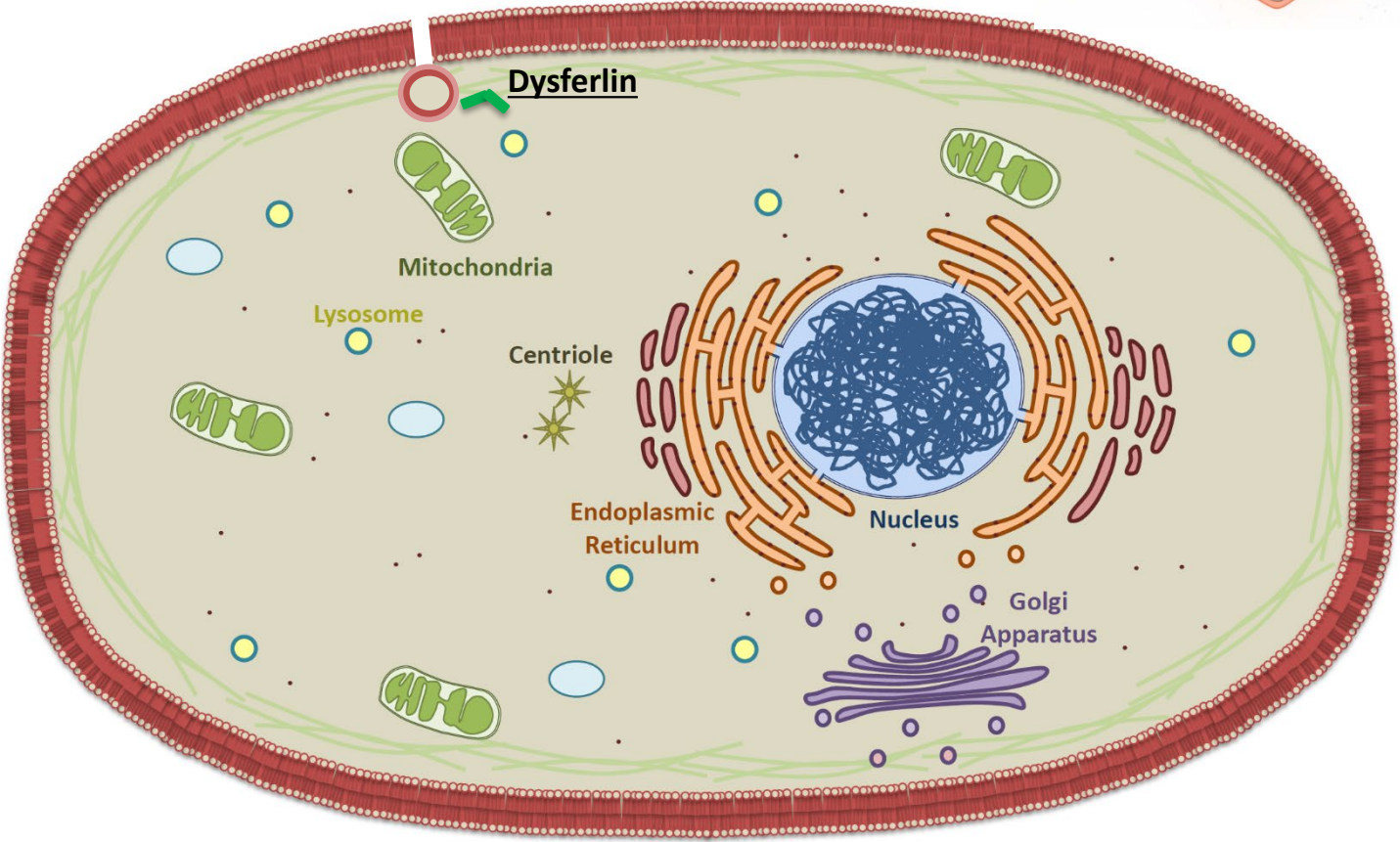
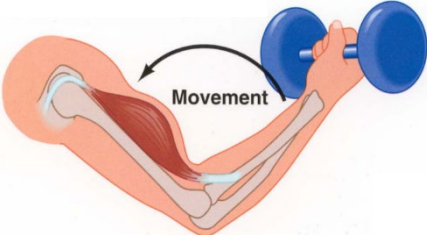
What causes dysferlinopathy?



Dysferlin Repairs Membrane Breaks in Human Muscle Cells



People with mutations in Dysferlin can't repair membrane breaks



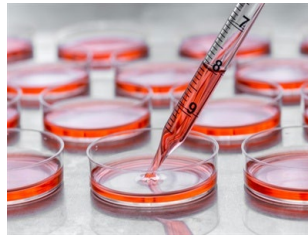
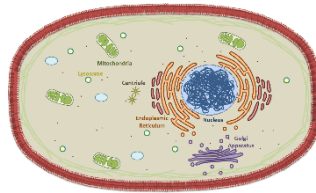
How do we Discover Disease Treatments?



Model Organisms



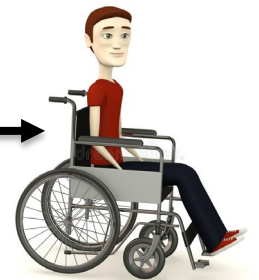
Human Cells



Live Mammals

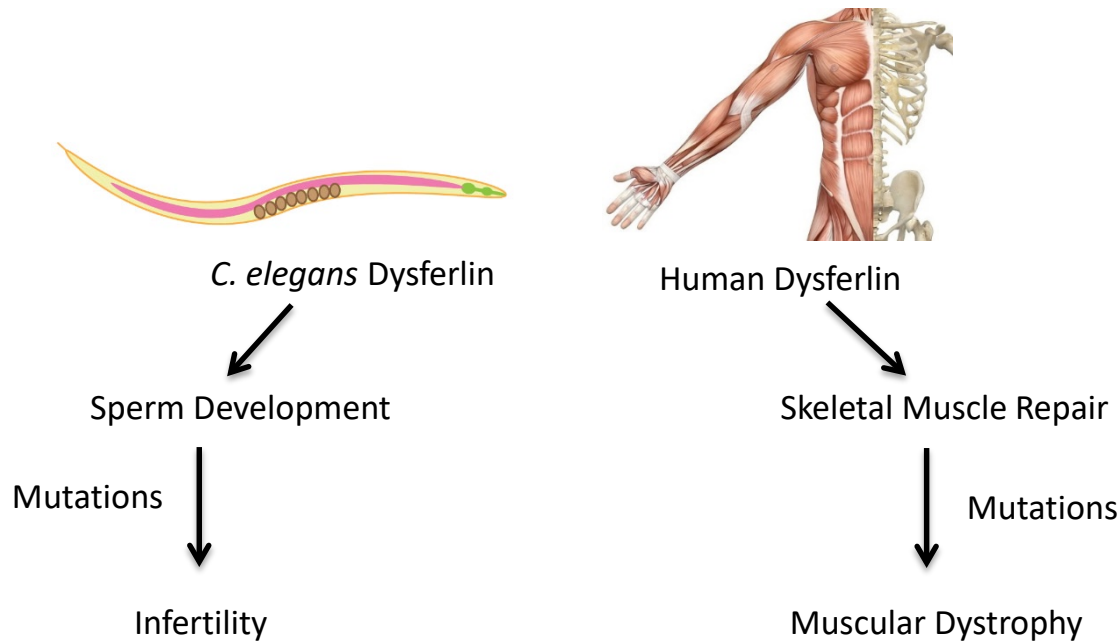


Clinical Trials



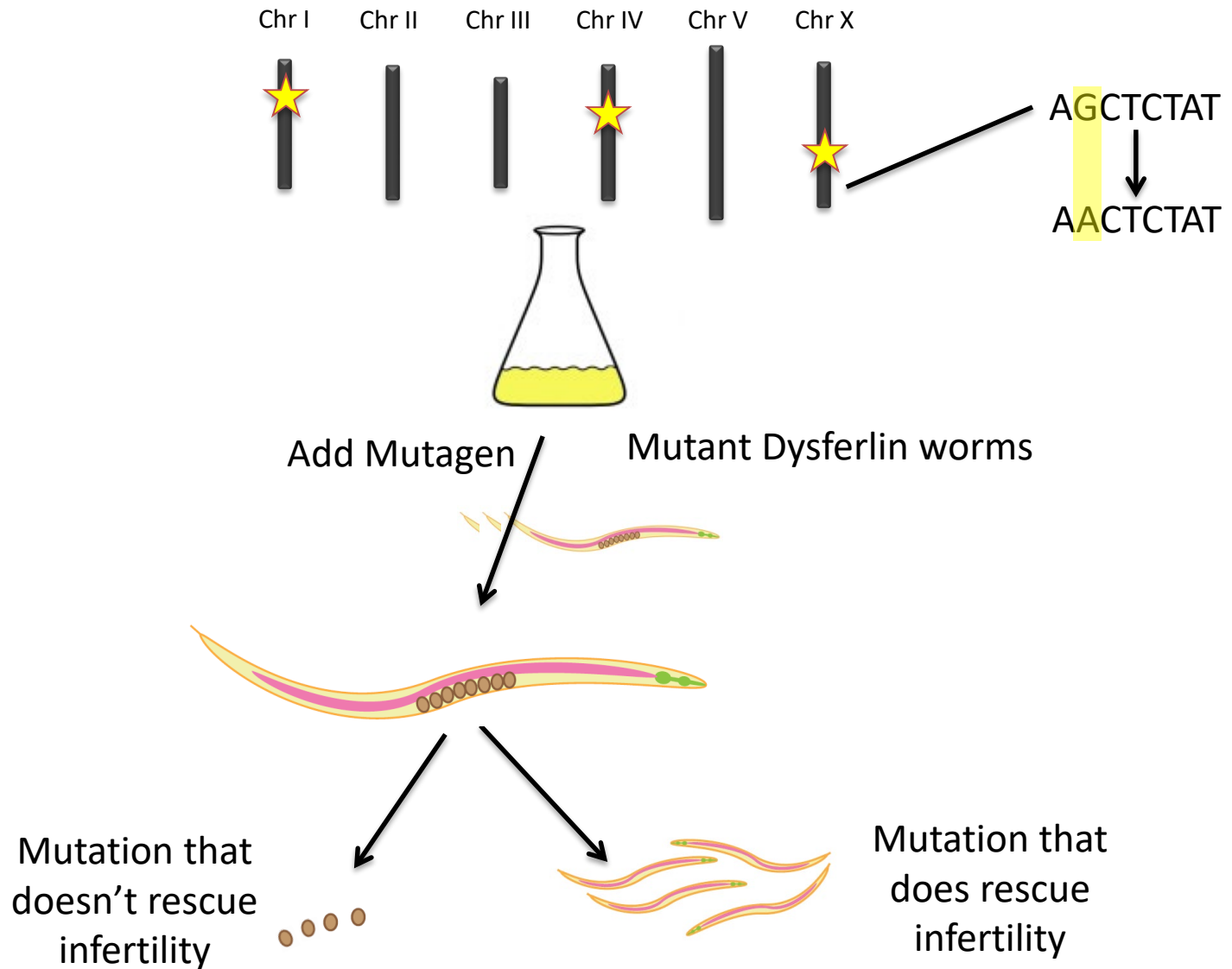
Mutations in Human Dysferlin causes Muscle Loss

Mutations in *C.elegans* Dysferlin causes Infertility



If we can find a treatment that rescues infertility in the worm, perhaps the same treatment can rescue muscle loss in human patients

Identifying mutations that rescue *C.elegans* infertility in Dysferlin Mutants



A Mutation in *Y75B8A.16* Restores Fertility of Mutant Dysferlin

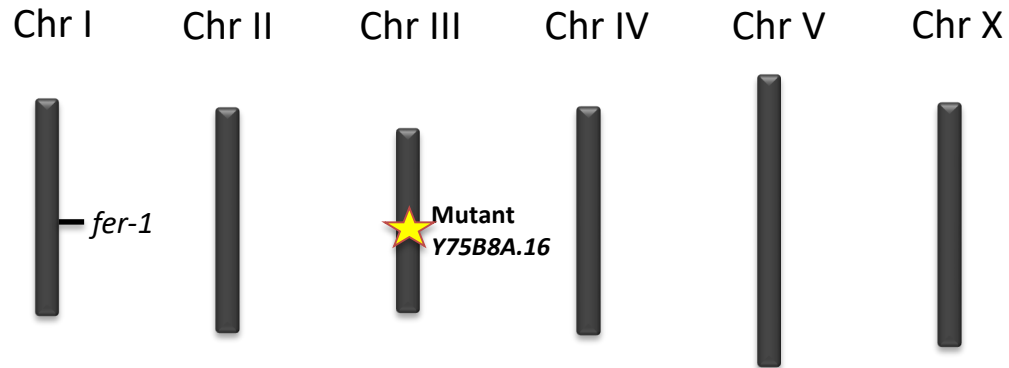
Benjamin McGuire



Nicole Zwicker




Khianna Del Valle



Normal *Y75B8A.16* GTC GGA AAA → Infertility

Mutated *Y75B8A.16* GTC GAA AAA → Fertility

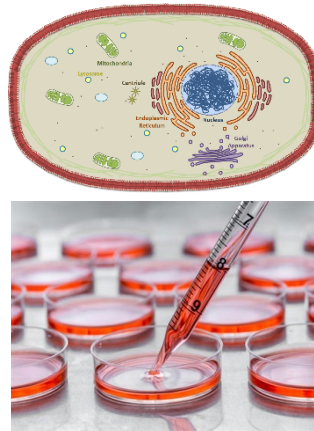


Results of Model Organism Studies

Model Organisms



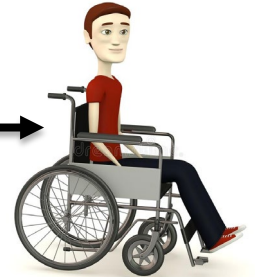
Human Cells



Living Mammals



Clinical Trials



Y75B8A.16 mutation

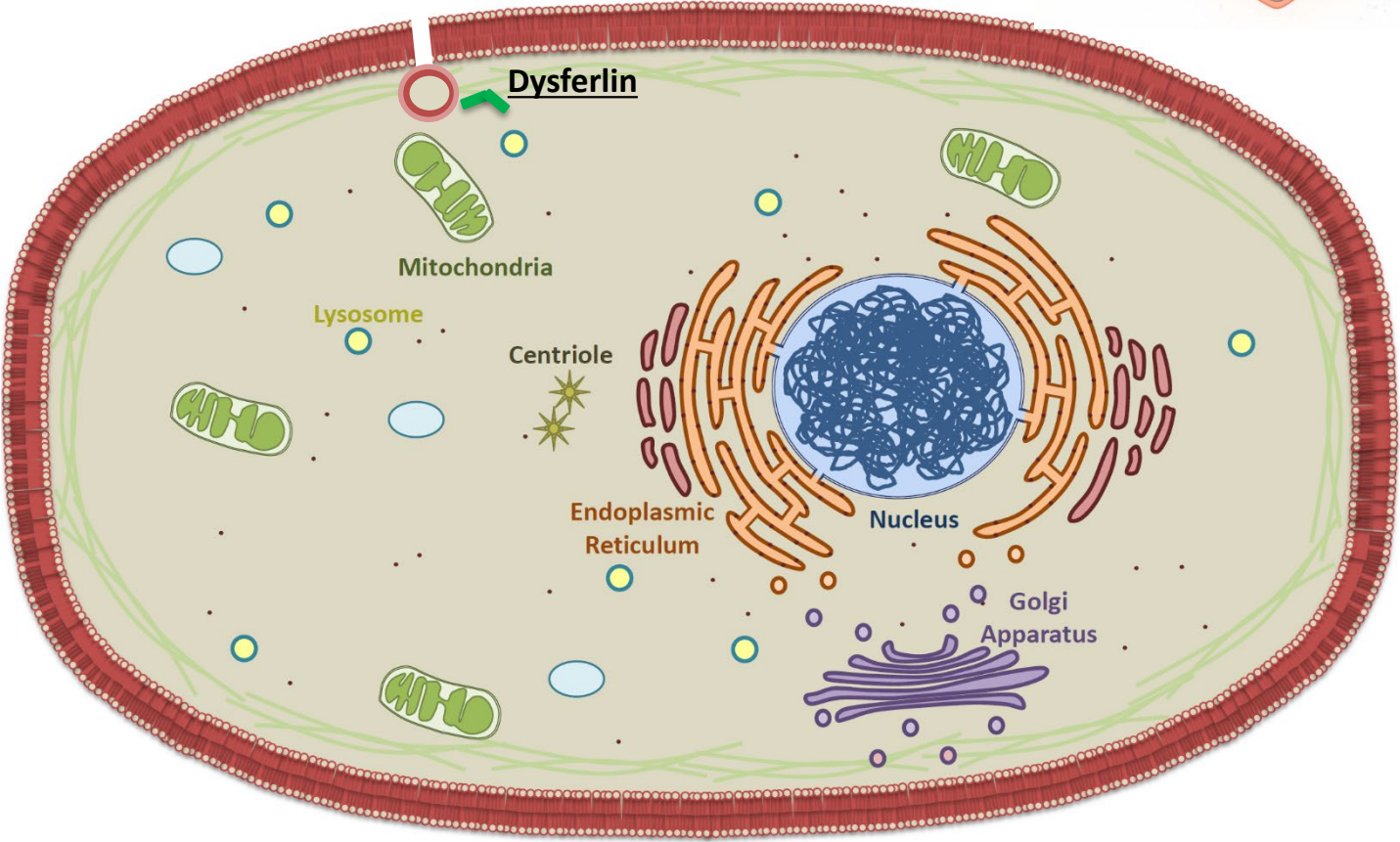
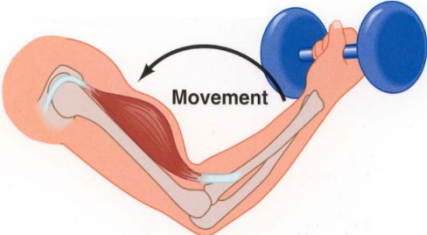


?

23 unmapped mutations

169 Drugs

People with mutations in Dysferlin can't repair membrane breaks

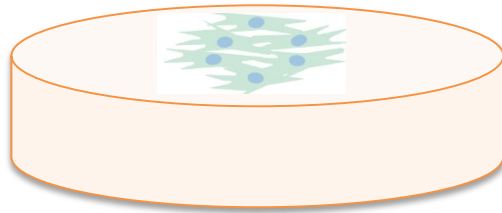


Mutant Dysferlin is Degraded in Human Cells

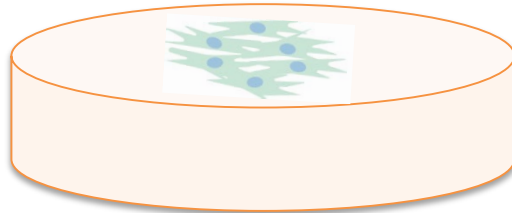
Anthony Manganaro



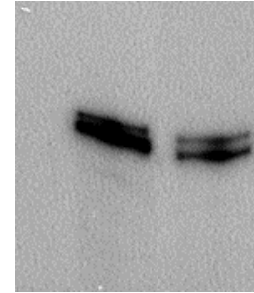
Normal DYSF



Mutant DYSF



DYSF Protein



Normal DYSF
Mutant DYSF

Sarah Olson

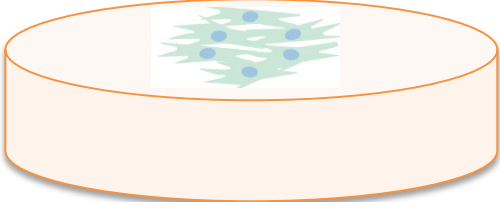


Y75B8A.16 homolog rescues degradation of mutant Dysferlin

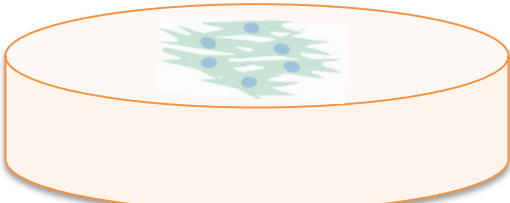
Anthony Manganaro



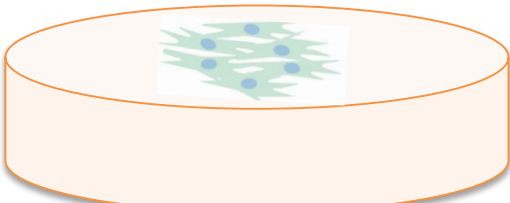
Normal DYSF



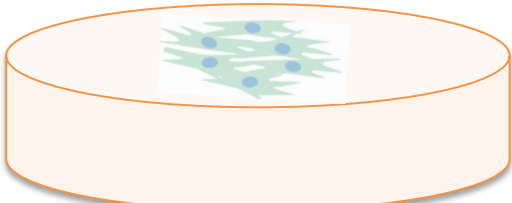
Mutant DYSF



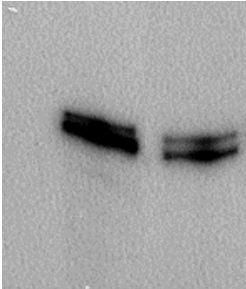
Mutant DYSF + Y75B8A.16 Homolog



Mutant DYSF + mY75B8A.16 Homolog



DYSF Protein



Normal DYSF
Mutant DYSF

Sarah Olson

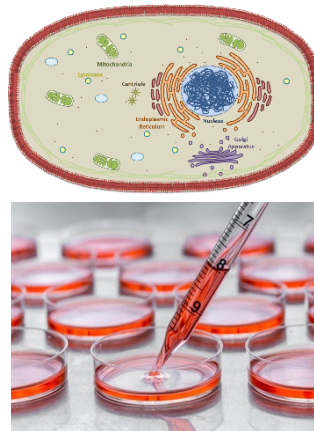


Results of Human Cell Studies

Model Organisms



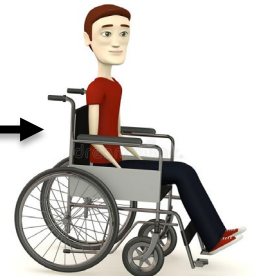
Human Cells



Living Mammals



Clinical Trials



Y75B8A.16 mutation

Y75B8A.16 homolog

23 unmapped mutations

1 drug

?

?

169 Drugs



Acknowledgements

Anthony Manganaro



Benjamin McGuire



Sarah Olson



Nicole Zwicker



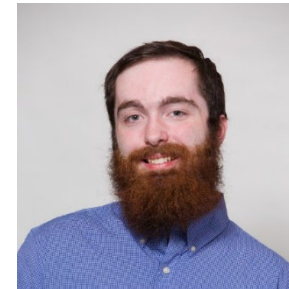
Khianna
Del Valle



Kyle Hofer

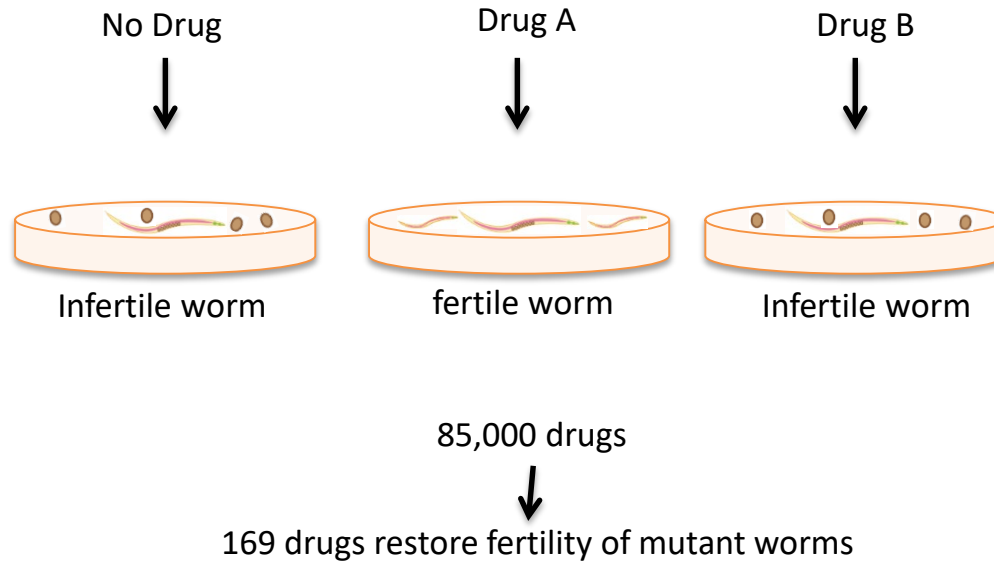


John Sanford

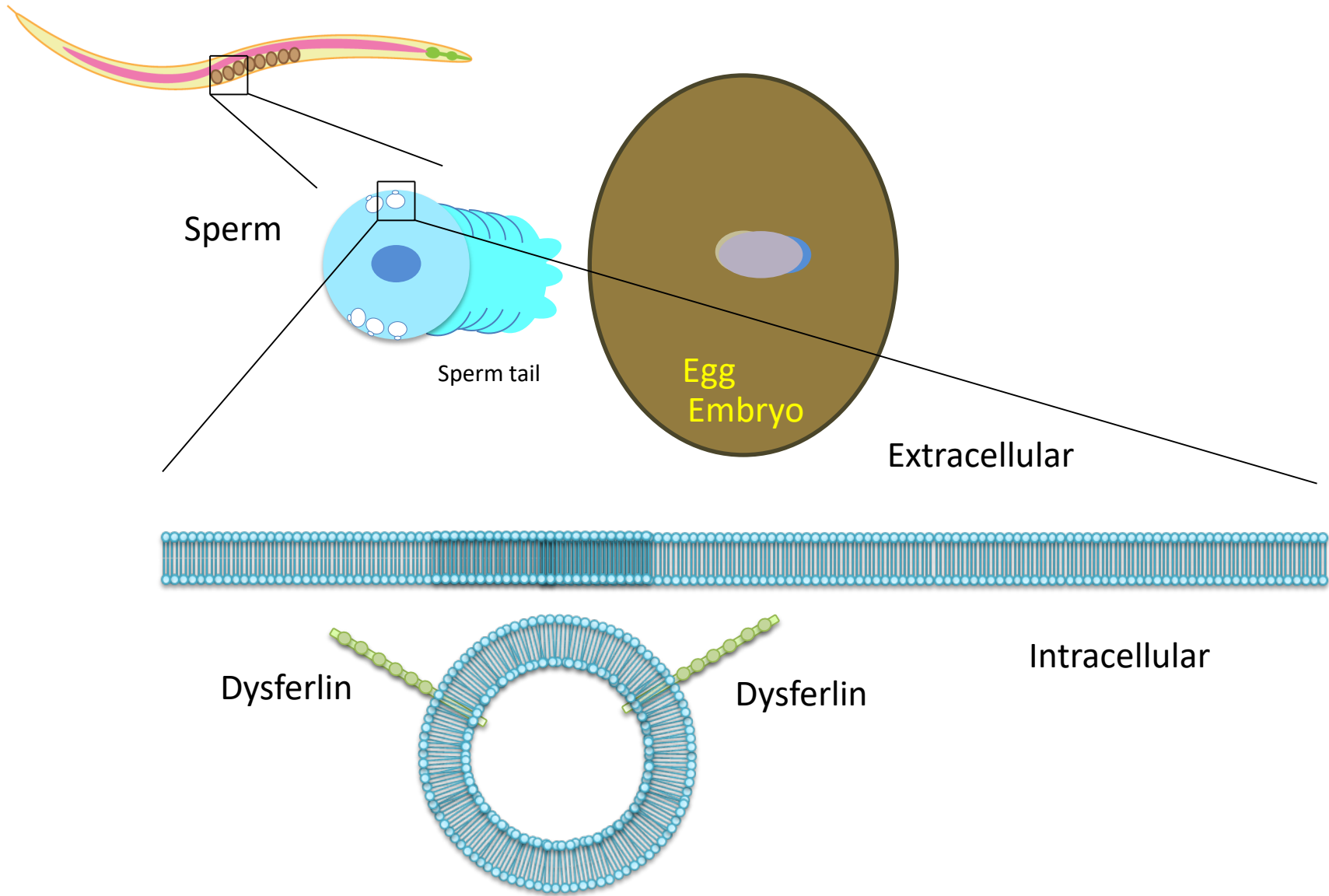




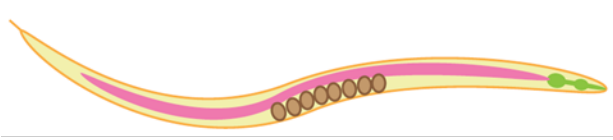
Experiment 1: Identifying drugs that rescue *C.elegans* infertility in Dysferlin Mutants



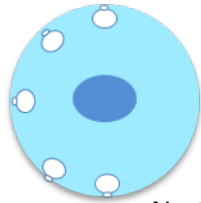
Why do mutations in *C.elegans* dysferlin cause infertility?



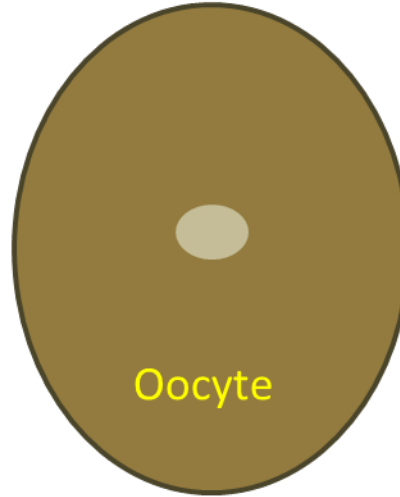
Mutations in *C.elegans* Dysferlin cause Infertility



Sperm

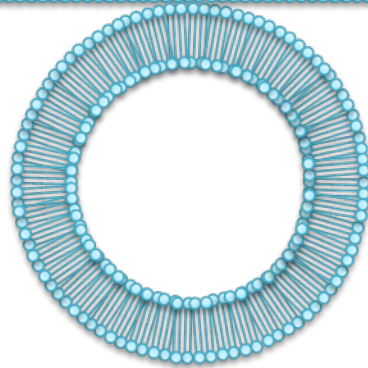
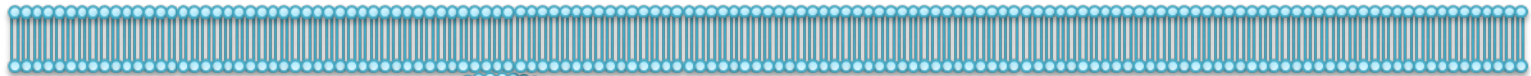


No tail



Oocyte

Extracellular



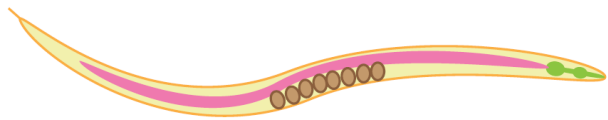
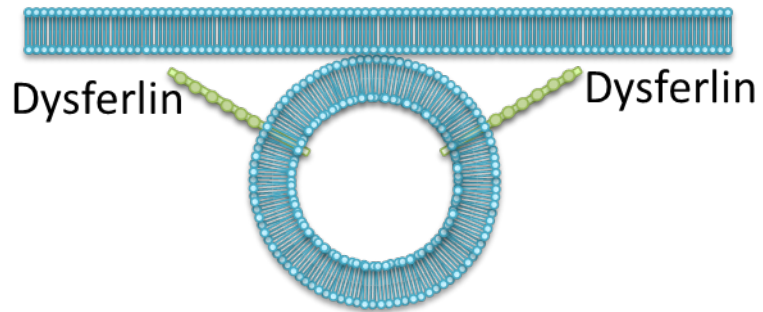
Membranous Organelle

Dysfunctional Dysferlin Intracellular

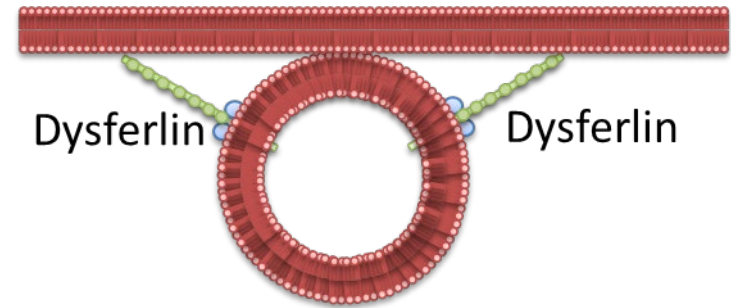


C.elegans Dysferlin and Human Dysferlin have the same Molecular Function: Membrane Fusion

C. elegans Sperm



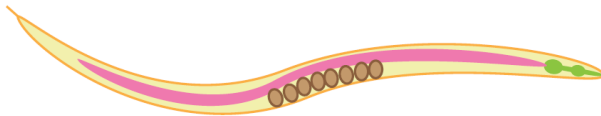
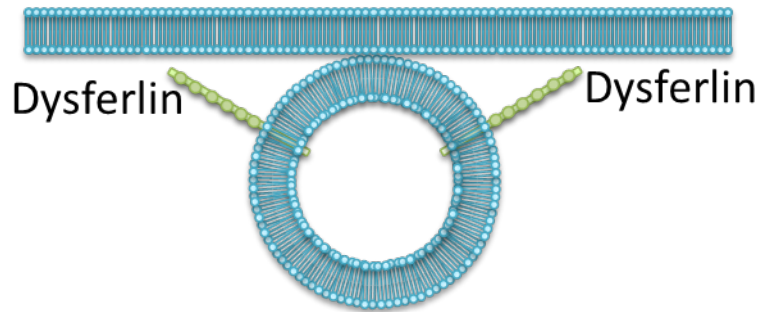
Human Skeletal Muscle



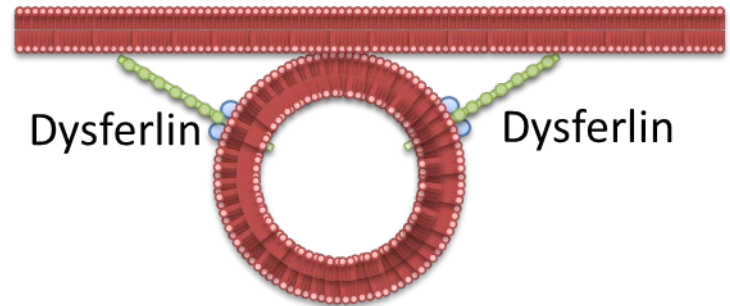
Hypothesis

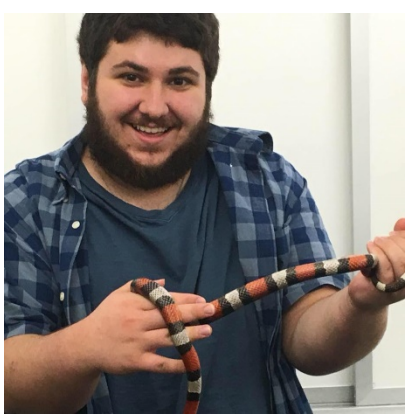
If we can find a treatment that rescues infertility in the worm, perhaps the same treatment can rescue muscle loss in human patients

C. elegans Sperm



Human Skeletal Muscle





C.elegans Y75B8A.16 and Human GPR89A have Very Similar Protein Structures

C. elegans Y75B9A.16

Human GPR89A

