




~ SEE MAP 1 ~

~ CONTINUED ON INSET 4-A BELOW ~

LEGEND

-  - FSU PROPERTY
-  - ON-CAMPUS HOUSING
-  - PATROL AREA BOUNDARY

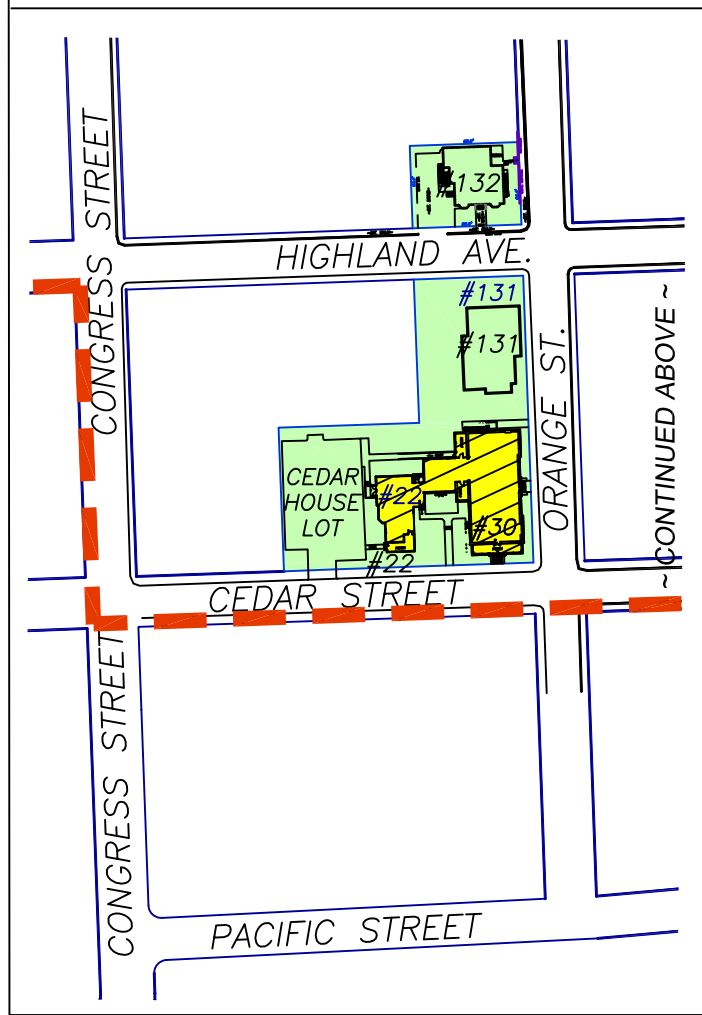
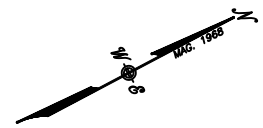
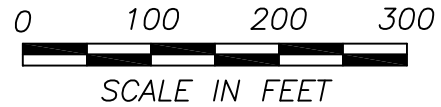
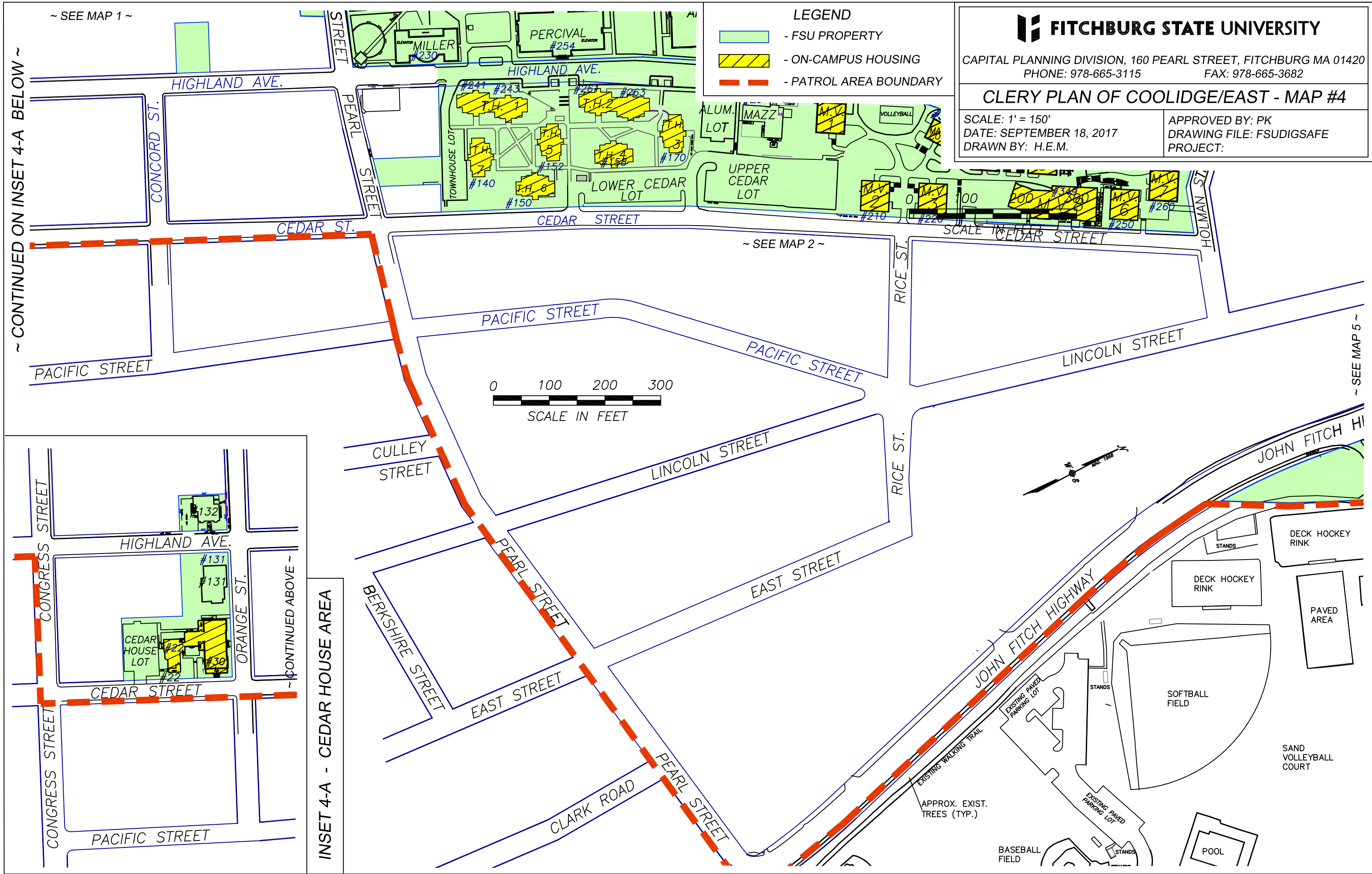
FITCHBURG STATE UNIVERSITY

CAPITAL PLANNING DIVISION, 160 PEARL STREET, FITCHBURG MA 01420
PHONE: 978-665-3115 FAX: 978-665-3682

CLERY PLAN OF COOLIDGE/EAST - MAP #4

SCALE: 1' = 150'
DATE: SEPTEMBER 18, 2017
DRAWN BY: H.E.M.

APPROVED BY: PK
DRAWING FILE: FSUDIGSAFE
PROJECT:



INSET 4-A - CEDAR HOUSE AREA

~ SEE MAP 5 ~

~ SEE MAP 2 ~

~ SEE MAP 1 ~

SCALE 1" = 150'

~ CONTINUED ABOVE ~

~ CONTINUED BELOW ~

BASEBALL FIELD

POOL

SOFTBALL FIELD

DECK HOCKEY RINK

PAVED AREA

DECK HOCKEY RINK

STANDS

SAND VOLLEYBALL COURT

STANDS

EXISTING PAVED PARKING LOT

APPROX. EXIST. TREES (TYP.)

EXISTING WALKING TRAIL

EXISTING PAVED PARKING LOT

JOHN FITCH HIGHWAY

JOHN FITCH HI

LINCOLN STREET

PACIFIC STREET

PACIFIC STREET

PACIFIC STREET

LINCOLN STREET

EAST STREET

EAST STREET

CLARK ROAD

PEARL STREET

PEARL STREET

BERKSHIRE STREET

CULLEY STREET

CULLEY STREET

CONGRESS STREET

PACIFIC STREET

CEDAR STREET

HIGHLAND AVE.

ORANGE ST.

HIGHLAND AVE.

CONCORD ST.

PEARL STREET

CEDAR ST.

CEDAR STREET

CEDAR STREET

HOLMAN ST.

TOWNHOUSE LOT

LOWER CEDAR LOT

UPPER CEDAR LOT

HIGHLAND AVE.

HIGHLAND AVE.

HIGHLAND AVE.

HIGHLAND AVE.

HIGHLAND AVE.

HIGHLAND AVE.

HIGHLAND AVE.

HIGHLAND AVE.

HIGHLAND AVE.

HIGHLAND AVE.

HIGHLAND AVE.

HIGHLAND AVE.

HIGHLAND AVE.

HIGHLAND AVE.

HIGHLAND AVE.

HIGHLAND AVE.

HIGHLAND AVE.

HIGHLAND AVE.

HIGHLAND AVE.

HIGHLAND AVE.

HIGHLAND AVE.

HIGHLAND AVE.

HIGHLAND AVE.

HIGHLAND AVE.

HIGHLAND AVE.

HIGHLAND AVE.

HIGHLAND AVE.

HIGHLAND AVE.

HIGHLAND AVE.

HIGHLAND AVE.

HIGHLAND AVE.

HIGHLAND AVE.

HIGHLAND AVE.

HIGHLAND AVE.

HIGHLAND AVE.

HIGHLAND AVE.

HIGHLAND AVE.

HIGHLAND AVE.

HIGHLAND AVE.

HIGHLAND AVE.

HIGHLAND AVE.

HIGHLAND AVE.

HIGHLAND AVE.

HIGHLAND AVE.

HIGHLAND AVE.

HIGHLAND AVE.

HIGHLAND AVE.