



## Fitchburg State University Today

Tuesday, Sept. 6, 2016 - Volume 7, Issue 1

### Welcome back

Fitchburg State launches the 2016-17 academic year with one of its largest and most diverse incoming classes. The fall semester will also see a milestone in institutional history with the formal installation of its 11th president, Richard S. Lapidus, in October.

With the semester beginning today, the university welcomes more than 1,000 first-year and transfer students. It is the university's second-largest incoming class

in its history, with students hailing from 228 high schools in Massachusetts, along with 22 other states and five foreign countries.



President Lapidus addressed new students from the steps of Edgerly Hall on Friday.

In his remarks to new first-year students on Friday, President Lapidus encouraged them to challenge themselves and step outside their comfort zones in the year ahead. He also described the campus' resources for helping students, and told students they should avail themselves of the help that's offered along the way.

New and returning students will find a campus that has undergone significant capital and personnel investment since the spring, including:

- The townhouse complex along Highland Avenue has been renovated to include glass-enclosed entryways that will increase safety, energy conservation and aesthetics.
- The second floor renovation of the C-wing at the McKay Complex has been completed.
- The university's Graduate and Continuing Education division is launching a new "big data" [certificate program](#), helping students develop knowledge and skills in data analysis and visualization, database development, machine learning and data mining. Certificate holders will gain competitive skills for careers across a wide array of areas

including medicine, bioinformatics, government, education, marketing, security and financial management.

## Inauguration & Homecoming events planned

This October, Fitchburg State celebrates a milestone in its history with the formal [inauguration](#) of President Lapidus. The installation ceremony at 2:30 p.m. **Thursday, Oct. 13** at the Athletics and Recreation Center is part of a larger campus celebration of the university's history.

Earlier this year, a cross-campus committee solicited and reviewed proposals for inaugural week programming that would appeal to students, faculty, staff members and the wider community. Those proposals were evaluated and a robust week of [programming](#) is in store for Tuesday, Oct. 11 through Sunday, Oct. 16.



The inaugural week is being held in conjunction with the revamped Homecoming weekend.

Visit the inauguration website at [fitchburgstate.edu/inauguration](http://fitchburgstate.edu/inauguration) for additional details.

## Library launches redesigned website

Visitors to the Amelia V. Gallucci-Cirio Library [website](#) will enjoy an entirely new experience after a comprehensive redesign completed over the summer. The redesigned site is more user-friendly and will help visitors avail themselves of the library's deep reserve of electronic collections.



Front and center on the library's home page is a powerful new search engine that lets visitors access the catalog, databases, online reference materials and other digital assets in a single search. "The virtue of this kind of search is its ability to leverage under-utilized resources, even as it provides myriad ways to filter and refine a given search," said Interim Dean of the Library and Academic Support Centers Sean Goodlett. Goodlett offered his thanks to the library and information technology staff who participated in the design and implementation of the site, especially project leader Nancy Turnbull.

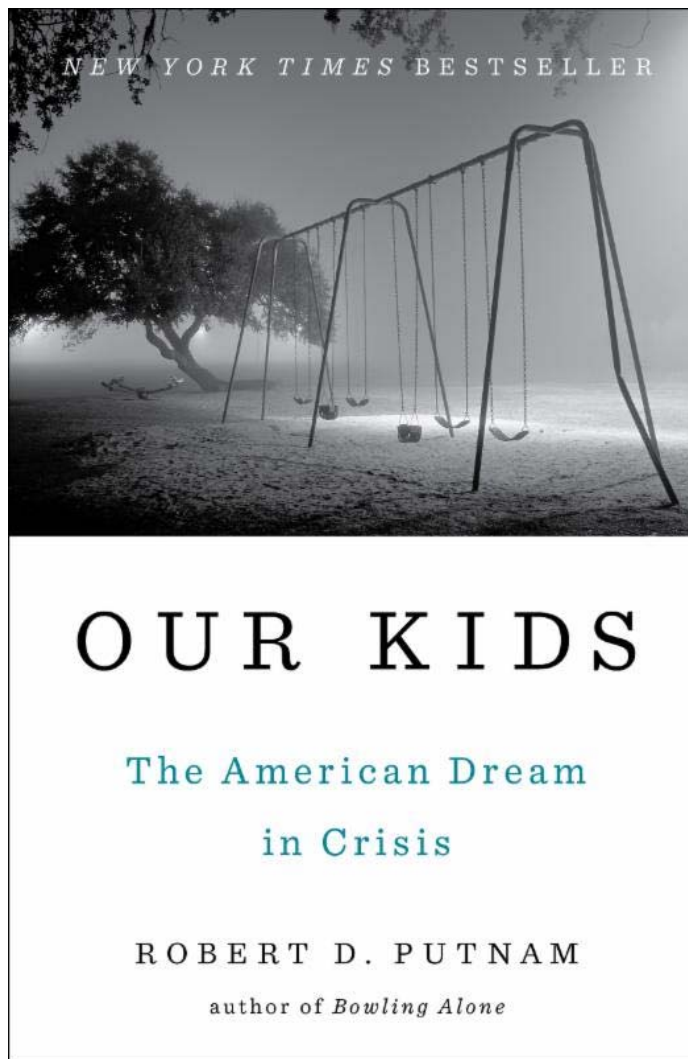
The redesigned library site is also "responsive," meaning it will adjust all content and navigation to the size of the user's screen, whether it's a desktop computer or smartphone.

## Community Read 2016-17 launches this month

Fitchburg State will launch its Community Read of Robert Putnam's powerful *Our Kids: The American Dream in Crisis* with a panel talk exploring the legal right to education, and the kind of education this nation's children deserve, on **Monday, Sept. 19.**

The talk, to be held at 3:30 p.m. in Ellis White Lecture Hall in Hammond Hall, will mark the university's observance of Constitution Day, held annually to recognize the adoption of the Constitution on Sept. 17, 1787. The Community Read events will continue throughout the academic year.

*Our Kids* is a New York Times bestseller and "a passionate, urgent" (The New Yorker) examination of the growing inequality gap. Putnam's volume offers a personal and authoritative look at a new American crisis where a growing "opportunity gap" has emerged over the past 25 years. The crisis challenges the traditional assumption that Americans who have talent and try hard will succeed.



The panel talk on Sept. 19 will feature Assistant Professor of Education Danette Day; Director of the United Neighbors of Fitchburg Joana Dos Santos; Fitchburg High School Principal Jeremy Roche; and Professor of Political Science Paul Weizer.

Admission is free.

## New choral director looks to grow programs

The Humanities Department welcomes Fitchburg State's new choral director Jonathan Harvey, who comes to campus eager to grow its choral programs with auditions already begun.

Harvey joins Fitchburg State after working for several years with high school, college and adult

choirs throughout New England. He has taught at UMass Amherst, Providence College, Elms College and the MacDuffie School, and also taught at UConn and Indiana University, where he earned his postgraduate degrees. He takes over the choral program after the retirement of longtime director Marjorie Ness.

"The most important part of music-making for me is creating a community wherein we're all working toward the same goal: creating something beautiful together," Harvey said. "I think that's a rare goal in today's world, and I love providing opportunities for musicians to come together in service of something that none of us could do on our own."



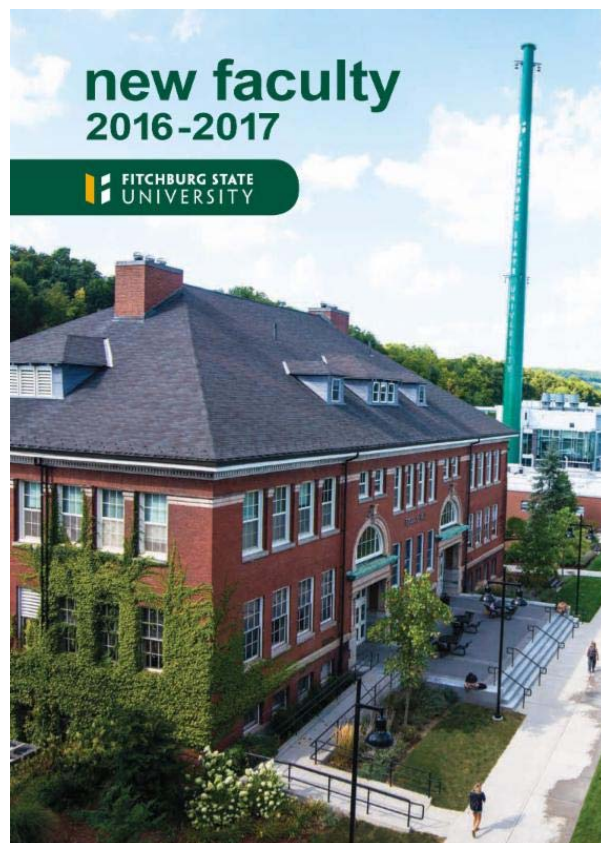
Jonathan Harvey

Harvey is already reaching out to high schools and community organizations to arrange collaborations and opportunities for the university's choral ensembles to perform off-campus. He's also planning to bring in guest conductors and composers, as well as work with other musical ensembles at Fitchburg State.

## University welcomes new faculty members

The campus welcomed more than a dozen new faculty members for the fall semester, serving departments across the university.

The Office of Academic Affairs prepared a document introducing them which is available in print or visible online. Check it out [here](#).



## Dual enrollment opportunities expanded with state grant

Just in time for the start of a new academic year, the Massachusetts Department of Higher Education has awarded \$910,000 in individual grants to 22 public colleges and universities to

expand opportunities for high school students to get a jump start on college.

Grants funded through the [Commonwealth Dual Enrollment](#)

[Partnership](#) (CDEP) will allow students to take free or low-cost college courses at local campuses and, in some cases, attend classes taught on location at their high schools or on line. CDEP students earn college credit toward an associate or bachelor's degree, often saving thousands of dollars in the process. Along with cost savings, research shows that dual enrollment courses help prepare students for the rigor and expectations of college-level work, making the experience especially valuable for 1st generation students and economically disadvantaged students who may not have access to college preparatory experiences and opportunities. In Massachusetts dual enrollment students who enroll in community colleges are 50 percent less likely to require developmental (remedial) classes compared to their peers who had not taken a dual enrollment course.

"Creating access to higher education is one of our core values," President Lapidus said. "We are grateful that this support from the Commonwealth will allow us to continue and expand upon the opportunities for students in our partner high schools."

"We are thrilled to be able to help these students earn college credit as they start to develop their career pathways," said Education Secretary Jim Peyser. "Dual enrollment is an important part of our administration's broader commitment to expanding early college experiences."

"As a new academic year begins, we want to open the dual enrollment doors as wide as possible, serving as many students as we can," said Carlos E. Santiago, Massachusetts Commissioner of Higher Education. "We know that this experience is a game-changer for young people, especially those who come from families where no one has attended college before. The program also strengthens the partnerships between high schools and local colleges, allowing for meaningful collaborations that support student success."

Last year, CDEP funding provided for the enrollment of slightly more than 2,000 students. This year's projected enrollment is 3,380. The primary goal of the fiscal year 2017 funding is to "increase dual enrollment of underrepresented students, which may include first-generation college students, low-income or economically disadvantaged students, students of color, and particularly male students of color."

Fitchburg State will expand its partnerships with area high schools to include Leominster High School, and will offer courses to groups (cohorts) of students in the late afternoon and on Saturdays to accommodate their schedules. Fitchburg State served 95 students through the Commonwealth Dual Enrollment Partnership last year, and is looking to expand that by 50 percent this year with the additional grant funding. The university's program already serves students through Upward Bound as well as agreements with Fitchburg High School and the Sizer School.

Also receiving funding in the grant cycle were UMass Boston, the Massachusetts College of Liberal Arts and Bristol Community College.

More information on the Commonwealth Dual Enrollment Partnership is available at [http://www.mass.edu/strategic/read\\_cdep.asp](http://www.mass.edu/strategic/read_cdep.asp).



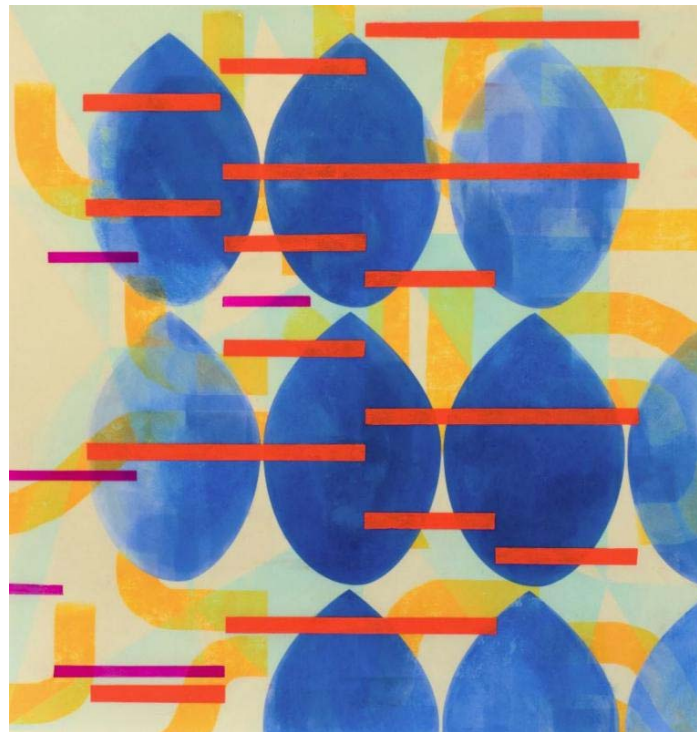
## CenterStage and cultural events

The richly layered, abstract and colorful work of artist Marina Thompson will be on display at the Hammond Hall Art Gallery through October 26, part of the university's CenterStage arts and culture series.

Thompson will discuss her work at 3:30 p.m. **Wednesday, Sept. 21** at the gallery, located in Hammond Hall at 160 Pearl St., Fitchburg. Admission is free.

Thompson's paintings explore a richly layered, abstracted, and introspective experience of her encounters and conversations with people, with herself, and with the world.

This colorful and graphic work merges printmaking with oil paint, gouache, flashe, and the ancient art of encaustic.



"Subsequent Antecedents" by Marina Thompson

After years of working in the field of illustration, illuminating words with images, Thompson is now imaging patterns of communication and human interaction. Her paintings record an abstracted, layered and introspective experience of her encounters and conversations with people, with herself, and with the world.

"Good communication requires kinetic creativity: many layers of light, color, texture, balance, nuance, and surprise," the artist says. "Pattern and repetition, rhythm and interruption are a big part of what make up our lives. Geometry helps us make sense of the world."

The pulse of color and the play of light and texture are constant sources of stimulation for her. Color creates light, light creates form. Thompson's paintings explore depth, energy and movement with illusions of volume, space, light and time.

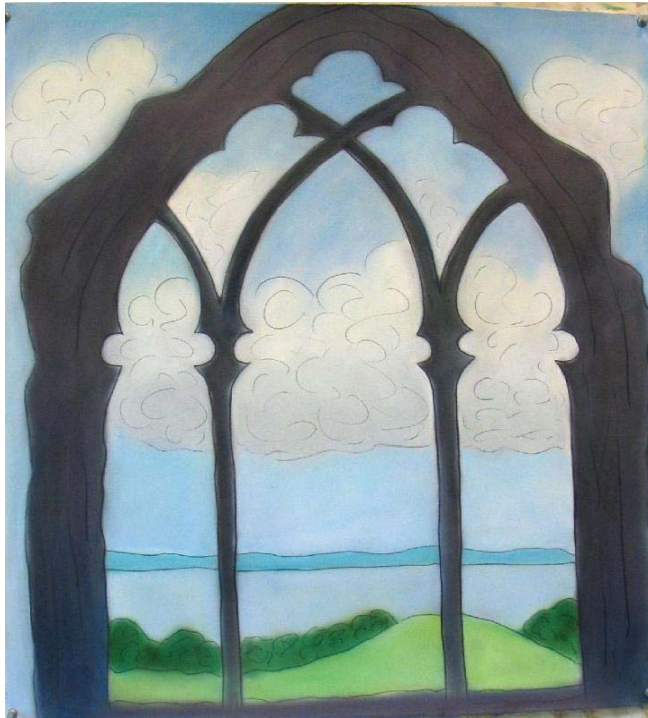
Learn more about the artist at her website, [marinathompson.com](http://marinathompson.com).

## Faculty notes

**Susan Wadsworth** (Humanities) has three works in the Central Massachusetts Women's Caucus for Art exhibition "In the Beginning" at the Townsend Library Meeting Hall Gallery at 12 Dudley Road, Townsend, running through September 28. Retired professor **Helen Obermeyer Simmons** also has several works in the show.

There will be a reception from noon to p.m. Saturday, Sept. 10. The gallery is open 10 a.m. to 9 p.m. Tuesday and Wednesday; 2 to 2 p.m. Thursday; 10 a.m. to 5 p.m. Friday; 10 a.m. to 2

p.m. Saturday; and 1 p.m. to 5 p.m. Sunday. The gallery is also accessible through the Senior Center, which is open 9 a.m. to 3 p.m. Monday through Thursday and 9 a.m. to 2 p.m. Friday.



"British Ruins I Oystermouth Chapel" is one of Susan Wadsworth's works featured in the Massachusetts Women's Caucus for Art exhibition.

## Join Our Mailing List

Fitchburg State University | 978-665-3000 | [fitchburgstate.edu](http://fitchburgstate.edu)

STAY CONNECTED:



Fitchburg State University, 160 Pearl Street, Fitchburg, MA 01420

[SafeUnsubscribe™ {recipient's email}](#)

[Forward this email](#) | [Update Profile](#) | [About our service provider](#)

Sent by [mbruun@fitchburgstate.edu](mailto:mbruun@fitchburgstate.edu) in collaboration with

**Constant Contact** 

Try it free today