

---

## Fitchburg State University Today

---

### Moot Court tournament returns in-person campus this week

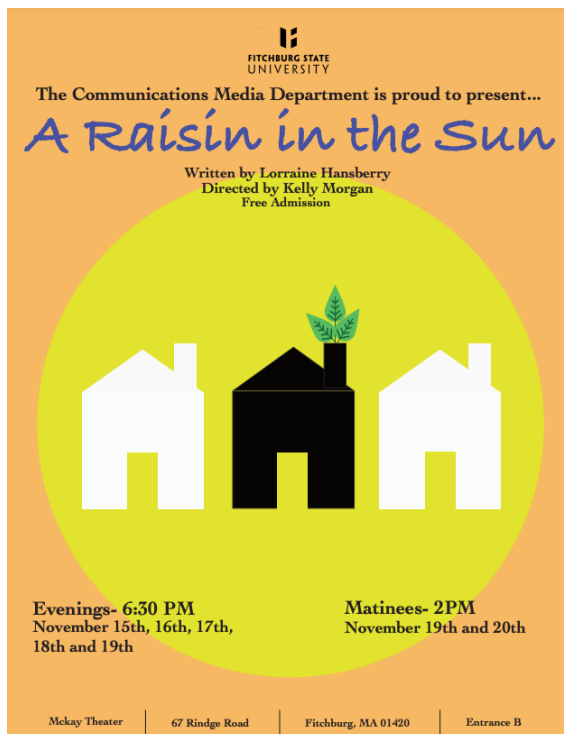
The constitutionality of drone surveillance and the fairness of lengthy prison terms for juvenile offenders will be under review when Fitchburg State University hosts the American Moot Court Association's Eastern Regional Tournament on **Friday, Nov. 18 and Saturday, Nov. 19.**

The competition, in which students are judged on their oral and written arguments on opposing sides of legal principles, will be conducted in-person for the first time since 2019.

"We are excited to provide our students with the opportunity to compete against top programs from across North America and even more excited to be hosting the event once again," said **Professor Paul Weizer** (Economics, History and Political Science), who has coached the university program since its inception. "Our students have worked very hard this year. I expect that they will be highly competitive in this event."

[Learn more](#)

# AMCA



**FITCHBURG STATE UNIVERSITY**

The Communications Media Department is proud to present...

## *A Raisin in the Sun*

Written by Lorraine Hansberry  
Directed by Kelly Morgan  
Free Admission

Evenings- 6:30 PM  
November 15th, 16th, 17th,  
18th and 19th

Matinees- 2PM  
November 19th and 20th

McKay Theater | 67 Rindge Road | Fitchburg, MA 01420 | Entrance B

### This week: *A Raisin in the Sun*

The Communications Media Department will present its production of Lorraine Hansberry's celebrated play *A Raisin in the Sun* this week.

The play tells the story of a lower-class black family's struggle to gain middle-class acceptance.

The university's production is directed by **Professor Kelly Morgan**.

"It is brutally upsetting that issues presented in this play still resonate with us as a society," Morgan said.

*A Raisin in the Sun* will be performed in the Wallace Theater for the Performing Arts at the McKay Complex at **6:30 p.m. Tuesday through Saturday**, with matinee performances at **2 p.m. Saturday and**

**Sunday.**

## Journalism speaker series continues Tuesday with Jake Vitali

Jake Vitali, city editor of the Sentinel & Enterprise, will discuss his new role in the city and the future of Fitchburg's own news publication at 2 p.m. Tuesday in Hammond G01, part of the "Good News, Bad News" journalism speaker series.

Vitali's presentation, entitled "Less Local News, Less Democracy," will discuss what is lost when papers like the Sentinel are bought out by major conglomerates and local reporters are no longer covering the local government. He will touch on how this impacts the daily lives of citizens in cities like Fitchburg.

Hosted by the Honors 1020 Current Events and Service Learning class.

The journalism series will continue at 2 p.m. Thursday, Dec. 1 in Ellis White Lecture Hall, when the campus welcomes GBH Radio reporter Adam Reilly, who will discuss the often problematic ways in which international politics influences the practice of journalists. He will draw from recent examples of the coverage of Ukrainian refugees and discuss deeper systemic issues in the field.



FITCHBURG STATE UNIVERSITY  
ENGLISH STUDIES

GOOD News,  
BAD News



Local News

### Less Local News, Less Democracy

Tuesday, November 15  
2 PM | Hammond Hall G01

**Jake Vitali,**  
City Editor of the Fitchburg Sentinel & Enterprise

Vitali will discuss his new role as city editor of the Fitchburg Sentinel & Enterprise, and the future of the publication. He will also discuss the issues that arise when local reporters are no longer covering the local government.



Hosted by the Honors 1020 Current Events and Service Learning class  
For more information please contact Dr. Wafa Unus at wunus@fitchburgstate.edu.



## Reminder: Alumnus hosts film screening Thursday

Filmmaker Graham Suorsa '02 will return to campus for a screening and discussion of his documentary film "The Fastest Woman on Earth" at 3:30 p.m. Thursday in Kent Recital Hall.

The film (see the [trailer here](#)) tells the story of Jessi Combs'

perseverance in the face of adversity, while trying to set the women's land speed record.

Suorsa, the film's director and co-producer, will introduce the screening and host a Q&A and informal "pizza with Graham" chat session afterward to connect with Falcons past and present.

## Campus Climate Survey open through next Wednesday

The Campus Climate Survey, administered every two years since 2018, is currently underway. The overall goal of the survey is to provide the university with important information about the living, learning and working environment, including perceived levels of equity and respect among students, faculty and staff.

We last conducted this survey in the fall of 2020 and the results were reviewed and utilized by groups across campus for purposes of planning and improvement, and

contributed to the focus of our 2020-2025 Strategic Plan being on education justice and being a student ready campus. The results from this administration will provide important data that will continue to inform the implementation of our 2020-2025 Strategic Plan.

The survey is scheduled to close on **Wednesday, Nov. 23**.

Please respond to the survey by clicking on the link below:

- [Faculty and Librarians](#)
- [Staff and Administrators](#)



## Celebrating what's "Made in Italy"

The [Center for Italian Culture](#) will continue its "Made in Italy" [series](#) at 7 p.m. **Thursday, Dec. 1** with the launch of a documentary film series from and about Italian made goods and products.

The first film in the series is *The Truffle Hunters* (2021), directed by Gregory Kershaw and Michael

Dweck, which chronicles a handful of quirky old men as they search for rare, expensive and delicious white Alba truffles deep in the forests of Piedmont, Italy. Watch a trailer [here](#).

The event will also include a screening of the short film *A Private Look into the Life of Carlo Mollino* (2017), directed by Felipe Sanguinetti, about the esteemed but enigmatic architect and designer Carlo Mollino, published in *American Vogue*, originally commissioned for Art Basel.

Throughout the 2022-23 academic year, the Center for Italian Culture will present a series of programs developed around the theme "[Made in Italy](#)." From fashion to sportscars to fine cuisine, the programs will spotlight the enduring impact and global reach of Italian-made products.

Learn more at [fitchburgstate.edu/made-in-italy](https://fitchburgstate.edu/made-in-italy).

## Keep up with campus happenings on the Burg Blog

The [Burg Blog](#) continues to offer timely updates of campus life.

Recent articles and slideshows highlight scenes from

a first-year experience

[terraforming lab](#), the 25th

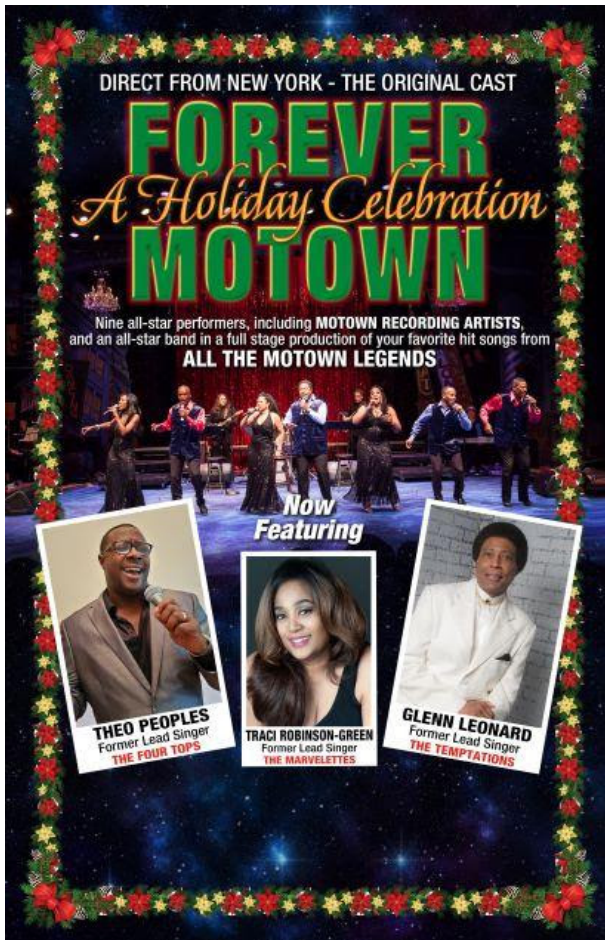
anniversary [celebration](#) for

TRIO SSS, a [gel electrophoresis lab](#), a behind-the-scenes [look](#) at the set

construction for the theater production of *A Raisin in the Sun*, and entrants in the







## CenterStage and cultural events

**Forever Motown: A Holiday Celebration on Friday, Dec. 9**

Direct from New York, see the original cast of "Forever Motown" in their rocking and rolling holiday special event with nine all-star performers featuring G.C. Cameron, former lead singer of The Spinners, Glenn Leonard, former lead singer of The Temptations, and Traci Robinson, former lead singer of The Marvelettes, accompanied by an all-star band.

"Forever Motown" will be presented at 7 p.m. **Friday, Dec. 9** in Weston Auditorium, part of the Fitchburg State CenterStage arts and culture series. [Tickets](#) are \$28 for adults; \$25 for seniors and Fitchburg State alumni and staff; and \$5 for students and guests under 18.

Tickets may be

purchased [online](#) at [fitchburgstate.edu/centerstage](http://fitchburgstate.edu/centerstage) or by calling the Weston Box Office at 978.665.3347. The box office is open from 12:30 to 3:30 p.m. Thursday and Friday.

### **Choral Kaleidoscope to be presented Tuesday, Dec. 6**

The Fitchburg State choirs will be joined by voices from Gardner High School, Murdock High School and Narragansett Regional High School for a "[Choral Kaleidoscope](#)" at 7 p.m. **Tuesday, Dec. 6** in Weston Auditorium.

Titles will include pieces from the Middle Ages to the present, from cultures around the world, including favorites like Bill Withers, Queen, "The Greatest Showman," and video game music.

### **In the Hammond Hall Art Gallery: Earth Foundation**

CenterStage features "Earth Foundation," a visual exhibit by photographer and geologist [Jonathon Wells](#), through Dec. 17.

Wells has created scientifically accurate photo-geologic composites with both surface and subsurface views since 2002. He continues to build the existing Location, Environmental, and Extraction series at sites around the world where he identifies a thought-provoking intersection of land use and underlying geology.

[Learn more](#)

### **On the Conlon Hall Media Wall: Celebrating World Kindness Day**

**Professor Donald Tarallo Jr.** (Communications Media) has helped organize an international [exhibition](#) in recognition of World Kindness Day (which was observed on Nov. 13). The exhibition, now on display on the Conlon Hall Media Wall, was created in collaboration with Zetafonts in Florence, Italy. The exhibition will run through the rest of the month.



---

## Faculty Notes

Associate Professor Mathangi Krishnamurthy (Chemistry) was a recipient of the [Outreach Volunteer of the Year Award](#) by the [American Chemical Society](#). Among other accolades, she was cited for commitment to mentoring the future generation of scientists in the Central Massachusetts region.

Associate Professor Michael Hove (Psychological Science) co-authored an [article](#) published this month in the journal *Current Biology* (published by Cell Press). The article, titled "Undetectable very low frequency sound increases dancing at a live concert," explores the impact of bass on behavior. The piece has also inspired writing in mainstream media outlets, including the [Guardian](#) and [NPR](#).

---

Join Our Mailing List

---



Fitchburg State University | 160 Pearl Street, Fitchburg, MA 01420

[Unsubscribe mbruun@fitchburgstate.edu](mailto:mbruun@fitchburgstate.edu)

[Update Profile](#) | [Constant Contact Data Notice](#)

Sent by [mbruun@fitchburgstate.edu](mailto:mbruun@fitchburgstate.edu) powered by



Try email marketing for free today!