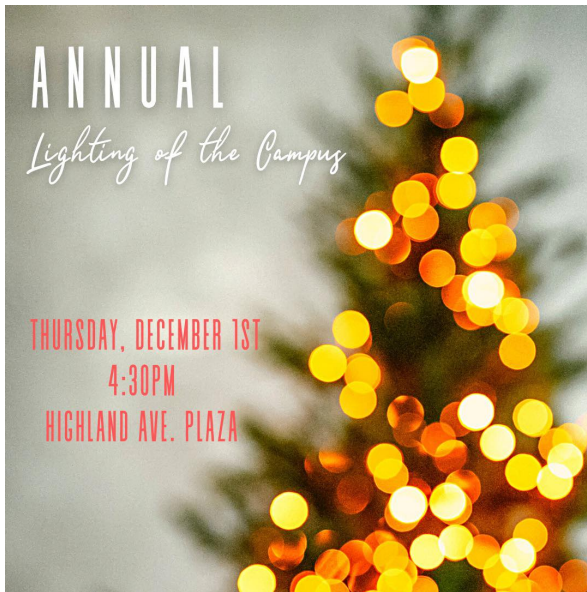


## Fitchburg State University Today



### Celebrate the Lighting of the Campus this Thursday, Dec. 1

This week, gather on the Highland Plaza for the lighting of the campus at **4:30 p.m. Thursday**.

In addition to the tree lighting, campus community members are invited to don their ugly holiday sweaters throughout the day.

### Helping community this holiday season

The Fitchburg Community Outreach Center reminds the campus of substantial ways to share in the spirit of the season.

These include the ongoing Share the Warmth coat drive, wherein new and slightly used adult coats and gloves may be dropped off at the Hammond Information Desk, or at the outreach center in Hammond G-23. The drive runs through the end of classes.

The university's annual Care and Share program is also up and running for the season. For more than 40 years, the university has "adopted" children from the McKay school community. The Care and Share Tree is now up next to the Hammond Information Desk, and includes information on gifts wanted by McKay families.

Individual child tags are available on a first-come, first-served basis. All unwrapped gifts are asked to be delivered to the Office of Student Development by Friday, Dec. 9.

**Share the Warmth**

Hosted By:  
Student Government Association  
and the  
Fitchburg Community  
Outreach Center

**Drop Off Locations:**  
Hammond Info Desk  
Falcon Bazaar / Ham. G-23  
OSD / Ham. G-13

**Now Accepting  
New/Slightly Used  
Adult Coats, Jackets, Gloves, Scarves  
for our FSU students in need!**

For more information, or to adopt an entire family of two to three children, please contact Alyssa Annese at [AanneseT@fitchburgstate.edu](mailto:AanneseT@fitchburgstate.edu).

---



## Journalism speaker series continues with Adam Reilly

The "Good News, Bad News" journalism speaker series will continue at 2 p.m. **Thursday** in Ellis White Lecture Hall, when the campus welcomes GBH News reporter [Adam Reilly](#), who will discuss the often problematic ways in which international politics influences the practice of journalists. He will draw from recent examples of the coverage of Ukrainian refugees and discuss

deeper systemic issues in the field.

Reilly is a regular contributor to GBH News programs including "Greater Boston" and "Boston Public Radio" and was a frequent guest on "Beat the Press." Before joining GBH, Reilly covered media and politics for the Boston Phoenix. He is a graduate of Carleton College and Harvard Divinity School.

Hosted by the Honors 1020 Current Events and Service Learning class.

---

## Celebrating what's "Made in Italy"

The [Center for Italian Culture](#) will continue its "Made in Italy" [series](#) at 7 p.m. **Thursday** with the launch of a documentary film series from and about Italian made goods and products.

The first film in the series is *The Truffle Hunters* (2021), directed by Gregory Kershaw and Michael Dweck, which chronicles a handful

of quirky old men as they search for rare, expensive and delicious white Alba truffles deep in the forests of Piedmont, Italy. Watch a trailer [here](#).



The event will also include a screening of the short film *A Private Look into the Life of Carlo Mollino* (2017), directed by Felipe Sanguinetti, about the esteemed but enigmatic architect and designer Carlo Mollino, published in American Vogue, originally commissioned for Art Basel.

Throughout the 2022-23 academic year, the Center for Italian Culture will present a series of programs developed around the theme "[Made in Italy](#)." From fashion to sportscars to fine cuisine, the programs will spotlight the enduring impact and global reach of Italian-made products.

Learn more at [fitchburgstate.edu/made-in-italy](https://fitchburgstate.edu/made-in-italy).

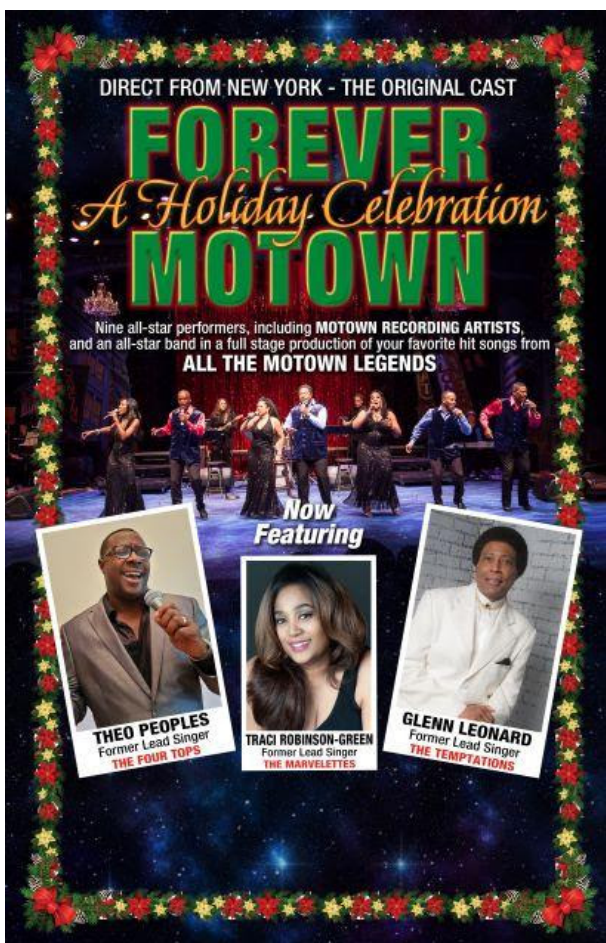
---

**Keep up with campus happenings on the Burg Blog**



The [Burg Blog](#) continues to offer timely updates of campus life.

Recent articles and slideshows include the powerful screening and discussion of [alumnus Graham Suorsa's](#) powerful documentary *The Fastest Woman on Earth*, scenes from the long-awaited return of the in-person Eastern Regional Undergraduate [Moot Court tournament](#); students enjoying [free succulents](#) courtesy of the Fitchburg Activities Board; the return of [therapy dogs](#) to the Hammond Main Lounge; and classroom scenes including [ceramics](#), [invertebrate biology](#) and [nursing](#).



## CenterStage and cultural events

**Forever Motown: A Holiday Celebration on Friday, Dec. 9**

Direct from New York, see the original cast of "Forever Motown" in their rocking and rolling holiday special event with nine all-star performers featuring G.C. Cameron, former lead singer of The Spinners, Glenn Leonard, former lead singer of The Temptations, and Traci Robinson, former lead singer of The Marvelettes, accompanied by an all-star band.

"Forever Motown" will be presented at 7 p.m. **Friday, Dec. 9** in Weston Auditorium, part of the Fitchburg State CenterStage arts and culture series. [Tickets](#) are \$28 for adults; \$25 for seniors and Fitchburg State alumni and staff; and \$5 for students and guests under 18.

Tickets may be

purchased [online](#) at [fitchburgstate.edu/centerstage](http://fitchburgstate.edu/centerstage) or by calling the Weston Box Office at 978.665.3347. The box office is open from 12:30 to 3:30 p.m. Thursday and Friday.

**Choral Kaleidoscope to be presented Tuesday, Dec. 6**

The Fitchburg State choirs will be joined by voices from Gardner High School, Murdock High School and Narragansett Regional High School for a "[Choral Kaleidoscope](#)" at 7:30 p.m. **Tuesday, Dec. 6** in Weston Auditorium.

Titles will include pieces from the Middle Ages to the present, from cultures around the world, including favorites like Bill Withers, Queen, "The Greatest Showman," and video game music.

### In the Hammond Hall Art Gallery: Earth Foundation

CenterStage features "Earth Foundation," a visual exhibit by photographer and geologist [Jonathon Wells](#), through Dec. 17.

Wells has created scientifically accurate photo-geologic composites with both surface and subsurface views since 2002. He continues to build the existing Location, Environmental, and Extraction series at sites around the world where he identifies a thought-provoking intersection of land use and underlying geology.

[Learn more](#)

### On the Conlon Hall Media Wall: Celebrating World Kindness Day

**Professor Donald Tarallo Jr.** (Communications Media) has helped organize an international [exhibition](#) in recognition of World Kindness Day (which was observed on Nov. 13). The exhibition, now on display on the Conlon Hall Media Wall, was created in collaboration with Zetafonts in Florence, Italy. The exhibition will run through the rest of the month.

---

## Faculty Notes

**Associate Professor Katherine Jewell** (Economics, History and Political Science) participated in a panel discussion on the Republican Southern Strategy as part of the American Political History Conference at Purdue University in Indiana. The discussion is [viewable](#) on C-SPAN.

**Assistant Professor Robin Chataut** (Computer Science) was featured in TechGuide's Expert Advice series. Read his profile [here](#).

---

Join Our Mailing List



Fitchburg State University | 160 Pearl Street, Fitchburg, MA 01420

[Unsubscribe mbruun@fitchburgstate.edu](mailto:mbruun@fitchburgstate.edu)

[Update Profile](#) | [Constant Contact Data Notice](#)

Sent by [mbruun@fitchburgstate.edu](mailto:mbruun@fitchburgstate.edu) powered by



Try email marketing for free today!